

# 2024 Covington Division III Sectional Wrestling (Coaches)

## Friday Feb 23:

7:00 – 7:45 pm      Seed Meeting (virtually via Microsoft Teams)

---

## Saturday February 24th

7:30 – 8:00 am      Teams arrive and enter the **Elementary/Middle General Admission door**

8:00 am              Weight- ins at Elem/Middle Gym by weight class starting at 106 lbs

9:15 am              Doors open to public

**Admissions:** Cash at door, or electronic through hometownticketing at <https://www.ohsaa.org/tickets>

- Student (6 years old +) - \$5.00
- Adults - \$8.00
- Children age five (5) or under are provided complimentary admission
- We will use stamps for re-entry.

10:00 am              Championship round 1

~10:30 am            Championship Rd 2 mixed with Consi round 2

~12:40 pm            Break for workers/officials

~1:00 pm              Championship Semi's mixed with Consi round 3

~2:50 pm              Consi Semi-finals

~3:30 pm              Break for workers/officials

~3:50\* pm            Finals- Top six places on two mats (no breaks – first open mat)

**\*Finals will start no sooner than 3:30 pm**

There are no awards at sectional level, however the champion will receive a bracket.

District pairings will be posted at [www.baumspage.com/wr](http://www.baumspage.com/wr) by noon on 2/25/24

---

### **Coach/Team Check-in:**

The Alpha-Master Roster and the wrestler weigh-in sheet must be provided to the tournament manager prior to starting the tournament.

### **Passes:**

All entry will be through the general admission doors. A pass for competing wrestlers will be included in the coach's envelope which can be picked up upon arrival **at the Elem/Middle school main entrance**. The competitor's pass will be collected upon team entry. If the wrestler leaves the building, make sure they know to get a hand stamp, otherwise they will need to purchase a ticket, then re-re-enter through general admission. If you bring wrestlers who do not compete, they must purchase a ticket for admission, or use the School Administrator pass (see below). All entry/re-entry will be through the general admission doors.

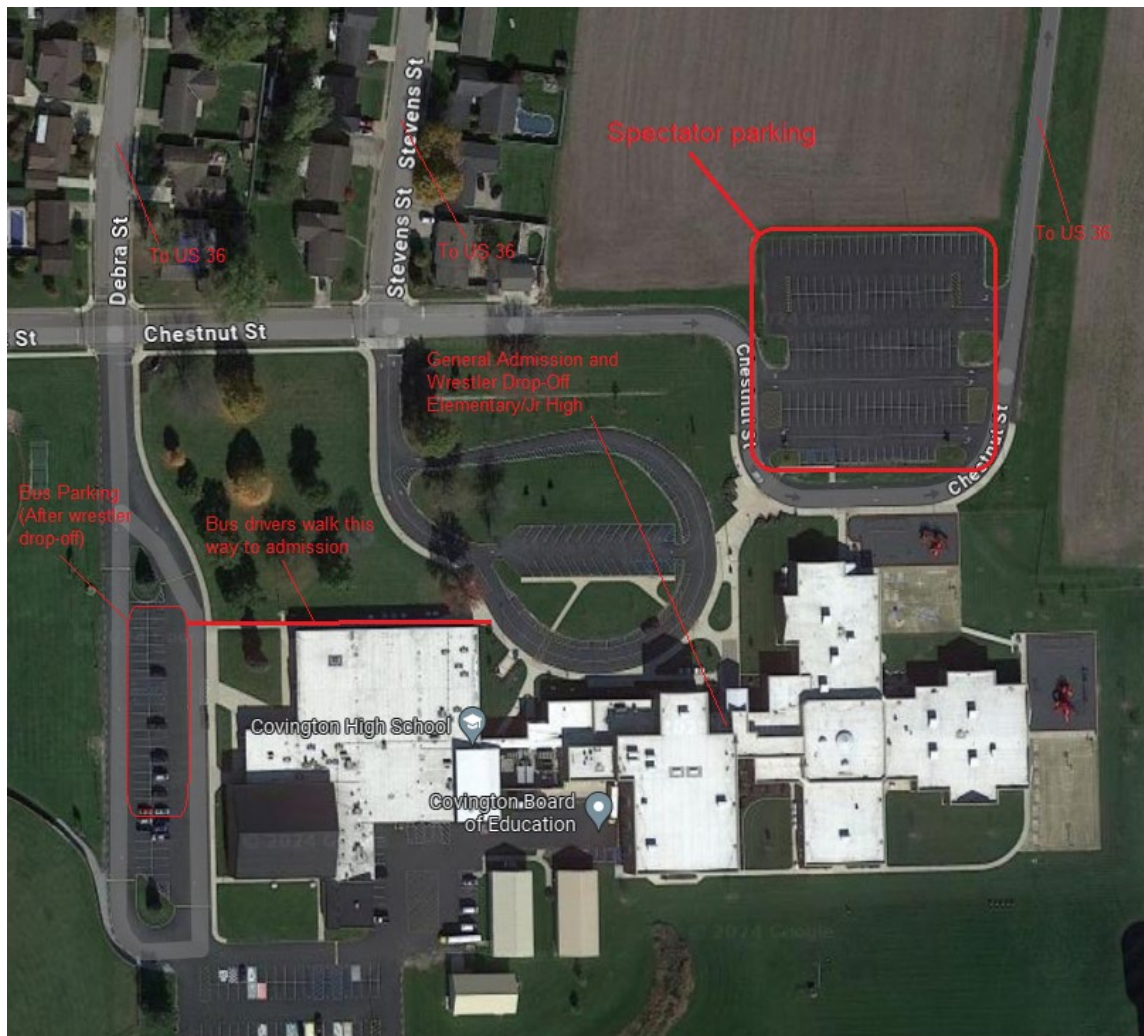
Each school is permitted One (1) Head Coach pass in the form of a wristband. Each school will be allowed additional people based on number of competitors—one to six (1-6) competitors will receive four (4) wrist bands, seven to ten (7-10) competitors will receive five (5) bands, and eleven to fourteen (11-14) will receive six (6) bands. Wristbands will be included in the coach's envelope. Wristbands are for coaches, stats, managers, and support personnel. Wrist bands **must be worn on the wrist** and shown to the admissions personnel to gain entry.

Cheerleaders – A maximum of six (6) in uniforms, must be accompanied by an advisor.

School Administrators Passes: Each participating school will receive complimentary admission for school administrators, digitally, through HomeTown Ticketing. One digital code will be provided to each school. Each code will have tickets attached to the code. The same code will be utilized, as a school advances in the tournament. These are for the AD to use for Superintendents, Principals, or whomever they see fit. You may want to inform your bus driver of this prior to departure.

### **Bus Parking Information:**

Busses drop wrestlers off at the general admission Door. After drop-off we request the bus park in the high school faculty lot, just to the west of the high school. There is a sidewalk on the north side of the high school that is the shortest walk to admissions. (see map below).



**Weather Contingency:**

Schools participating in wrestling tournaments and reside in a county that experiences a Level Two (2) or Level Three (3) weather emergency, that SITE (tournament) will be postponed. In Covington's case, the postponement will be one day. Tournament manager will contact the District Board and make every effort to personally contact each schools coach, athletic director, or principal. Schools are encouraged to make use of the Board website [www.swdab.org](http://www.swdab.org) for updated information regarding postponements and cancellations.

**Hospitality (at Concession Stand):**

Your coach's packet will contain sets of hospitality tickets for a brunch, and a dinner. Present your ticket at the **concession stand** to redeem your food/drink. The number of tickets in a set is based on participating wrestlers as follows:

- 2 for 1-6 participating wrestlers
- 3 for 7-10 participating wrestlers
- 4 for 11+ participating wrestlers

**Concessions:**

Concessions will be provided. No outside food for spectators will be permitted. Each wrestler may pack their food for the day, but no coolers or warmers are permitted.

**Professionalism of coaches:**

It is the moral obligation of all Ohio Wrestling Coaches to conduct themselves in a manner that reflects credit upon their high school, their profession and themselves. Personal grooming and appropriate dress is a standard of professionalism. The wearing of T-shirts and warm-ups (top or bottom), head wear and similar apparel are not considered suitable attire for coaches during the OHSAA Sectional, District or State Wrestling Tournaments and therefore are prohibited. Coaches are required to wear dress slacks or khakis, a shirt with a collar, and appropriate footwear, such as sneakers, dress shoes, etc. Flip flops and sandals are examples of inappropriate footwear. Coaches who are inappropriately dressed will not be allowed on the competition floor. Moral obligation and ethical conduct are part of winning and losing. Good sportsmanship, appearance, honor and concern for the well-being of the competitors should be placed before all else. The Rules have been established in the spirit of this statement.

**Miscellaneous:**

- Failure to show-up for tournament contest / refusal to finish contest which has been started and suspended for any reason is a fine of \$150.00 plus cost of officials, site expenses, and team expenses incurred by opposing team.
- Wrestlers must be ready when called to mat.
- Locker room space is very limited. Some wrestlers will need to share a locker. It is recommended that wrestlers bring a lock to secure their belongings.
- State regulation can be found on the OHSAA website.

**Manager Contact Information:**

Brad Hall

Cell: 937-238-0915

Email: [bhall130@woh.rr.com](mailto:bhall130@woh.rr.com)